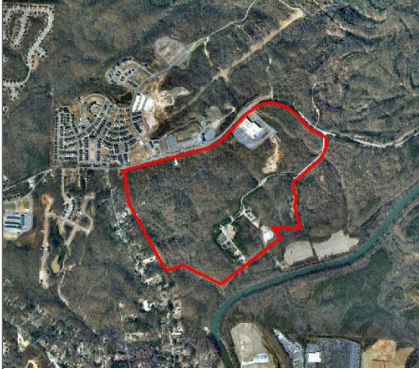




Tributary Park of Commerce



Contact Information

Georgia Electric
Membership Corporation
75 Fifth Street, Suite 710
Atlanta, GA 30308
(800) 339-7185



Location

Property Name: Tributary Park of Commerce
Street Address: Riverside Parkway
Zip Code: 30135
City: Douglasville
County: Douglas

Specifications

Type: land
Minimum Available: 1.00 Acres
Maximum Available: 200.00 Acres
For Sale: yes
For Lease: no
Listing ID: 7106
Available yes
Total Acreage: 200
Available Acreage: 200

Utility

Electric Proximity: On Site
Electric Service Provider: Greystone EMC
Natural Gas Proximity: On Site
Gas Provider: City of Austell
Natural Gas Line Size: 10"
Sewer Proximity: On Site
Water Proximity: On Site
Water Line Size: 16"

Transportation

Rail Access: no
Closest Interstate: I 20

Distance to Major Interstate: 5 Miles
Closest Highway: GA 154
Distance to Major Highway: 1 Mile
Closest Intermodal Facility: Atlanta
Distance to Intermodal Facility: 8 Miles
Closest Commercial Airport: Hartsfield Jackson
Distance to Commercial Airport: 13 Miles
Runway Length: 11890'
Closest Local Airport: Fulton County Brown Field
Distance to Local Airport: 8 Miles
Runway Length: 5796'
Closest Seaport: Savannah
Distance to Seaport: 230 Miles

Last Updated

5/28/2009

Contact Information

Georgia EMC
75 Fifth Street Suite 710
Atlanta, GA 30308
800.339.7185

This information is believed to be accurate and from sources deemed reliable.
We assume no liability of errors, omissions or changes to this content.